



# PRODUCTS | SERVICES

TOTAL UNDERGROUND SOLUTIONS SINCE 1982



## STEEL TRENCH BOXES

800-836-5011  
WWW.ICONJDS.COM



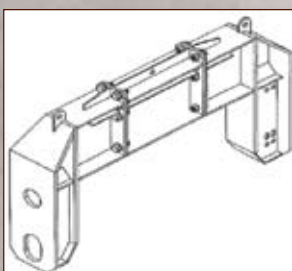
# STEEL TRENCH BOXES

Steel trench boxes are a fast, safe and effective way to shore up your trenches and shield your employees from a potential excavation collapse or fatal cave in.



## SRSPREADER SETS

MODEL	DESCRIPTION	WEIGHT (Lbs.)
SPR8-024	24" (2') Spreaders	350
SPR8-030	30" (2.5') Spreaders	430
SPR8-036	36" (3') Spreaders	520
SPR8-042	42" (3.5') Spreaders	610
SPR8-048	48" (4') Spreaders	695
SPR8-054	54" (4.5') Spreaders	780
SPR8-060	60" (5') Spreaders	870
SPR8-072	72" (6') Spreaders	1040
SPR8-084	84" (7') Spreaders	1215
SPR8-096	96" (8') Spreaders	1390
SPR8-108	108" (9') Spreaders	1560
SPR8-120	120" (10') Spreaders	1736
SPR8-132	132" (11') Spreaders	1910
SPR8-144	144" (12') Spreaders	2085
SPR8-156	156" (13') Spreaders	2255
SPR8-168	168" (14') Spreaders	2430
SPR8-180	180" (15') Spreaders	2600



## HIGH ARCH SPREADER

Let ICON customize a high arch spreader to your next bore project or large diameter pipe project today. All orders are job specific.

## 4-INCH DOUBLE WALL

MODEL	DIMENSIONS		PIPE CLEARANCE (In.)	WEIGHT (Lbs.)	SHIELD CAPACITY (Psf)	ALLOWABLE DEPTH (Ft.) by soil type **			
	H	L				A	B	C(60)	C
TS-0408-DW4	4	8	20	2430	5540	50	50	50	50
TS-0410-DW4	4	10	20	2780	3390	50	50	50	43
TS-0412-DW4	4	12	20	3150	2280	50	50	38	29
TS-0416-DW4	4	16	20	3730	1230	47	27	21	16
TS-0420-DW4	4	20	20	4420	770	29	17	13	10
TS-0608-DW4	6	8	42	3300	4330	50	50	50	50
TS-0610-DW4	6	10	42	3840	3420	50	50	50	45
TS-0612-DW4	6	12	42	4320	2310	50	50	40	31
TS-0616-DW4	6	16	42	5785	1250	49	29	22	17
TS-0620-DW4	6	20	42	7435	880	34	20	16	13
TS-0808-DW4	8	8	62	4220	2100	50	48	37	29
TS-0810-DW4	8	10	62	4435	1680	50	39	30	24
TS-0812-DW4	8	12	62	5200	1400	50	33	26	21
TS-0816-DW4	8	16	62	7350	1250	50	30	24	19
TS-0820-DW4	8	20	62	9550	900	36	22	18	14

## 6-INCH DOUBLE WALL

MODEL	DIMENSIONS		PIPE CLEARANCE (In.)	WEIGHT (Lbs.)	SHIELD CAPACITY (Psf)	ALLOWABLE DEPTH (Ft.) by soil type **			
	H	L				A	B	C(60)	C
TS-0412-DW6	4	12	20	3720	3680	50	50	50	47
TS-0416-DW6	4	16	20	4590	1990	50	44	34	26
TS-0420-DW6	4	20	20	5240	1250	48	28	22	17
TS-0424-DW6	4	24	20	6300	850	32	19	15	12
TS-0428-DW6	4	24	20	7230	620	23	14	11	9
TS-0612-DW6	6	12	42	5465	3690	50	50	50	48
TS-0616-DW6	6	16	42	6610	2000	50	50	35	27
TS-0620-DW6	6	20	42	8370	1250	49	29	23	18
TS-0624-DW6	6	24	42	9540	950	37	22	18	14
TS-0628-DW6	6	28	42	11540	740	29	17	15	11
TS-0812-DW6	8	12	65	6880	2030	50	47	36	28
TS-0816-DW6	8	16	65	8525	2000	50	46	36	28
TS-0820-DW6	8	20	65	9980	1250	50	30	24	19
TS-0824-DW6	8	24	65	12400	960	38	24	19	15
TS-0828-DW6	8	28	65	15650	790	32	20	16	13
TS-1012-DW6	10	12	86	8410	1600	50	38	30	24
TS-1016-DW6	10	16	86	10560	1200	49	31	24	19
TS-1020-DW6	10	20	86	12540	960	40	25	20	16
TS-1024-DW6	10	24	86	15035	860	35	22	18	15
TS-1028-DW6	10	28	86	18880	770	32	20	16	13

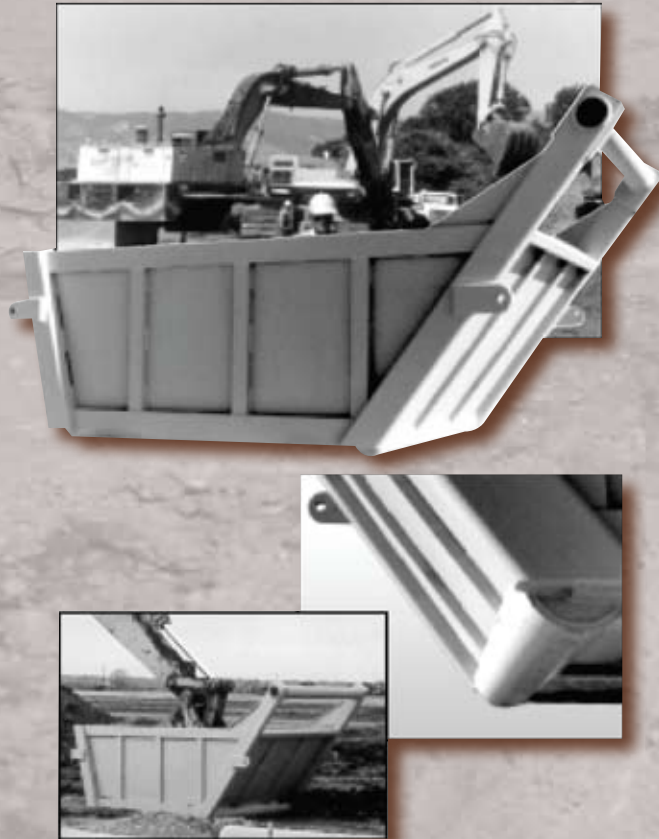
\*ICON has listed 4" and 6" double wall steel boxes in this printed brochure only but 3" single wall and 8" double wall boxes can be ordered upon request. More information on these boxes can also be found by going to our website [www.iconjds.com](http://www.iconjds.com)



This picture shows multiple steel trench boxes being used in a 20' deep trench for the installation of drainage lines.



# STONE BOXES / MANHOLE BOXES



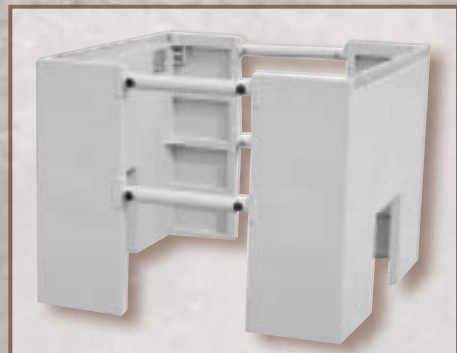
## STONE BOXES

- High-Tensile Steel Construction for extra-long service life.
- Half-Inch Steel Bottoms and Ends minimize routine bucket contact wear and tear.
- High-Strength Tubular Frame for durability and structural integrity.
- Standard Skid Bottoms reduce wear from dragging and walking movement.
- Radius-Pipe Skid Bar reduces material accumulation (plowing effect) while pushing forward.
- Standard Lifting/Pulling Lugs for easy sling attachment and box movement.
- Sloped Ends for efficient bucket access and retrieval of bedding material.
- Standard Lift/Walk Bars for added ease of handling with the excavator.

MODEL	DIMENSIONS		PIPE CLEARANCE (In.)	WEIGHT (Lbs.)	SHIELD CAPACITY (Psf)	ALLOWABLE DEPTH (Ft.) by soil type **			
	H (Ft.)	L				A	B	C(60)	C
<b>Single-Wall</b>									
MHS-0808-SW	8	8	45	3590	1200	49	29	24	19
MHS-0810-SW	8	10	45	4650	750	32	20	15	13
MHS-0812-SW	8	12	45	5555	520	22	14	11	10
<b>Double-Wall</b>									
MHS-0808-DW	8	8	45	4115	2000	50	47	36	29
MHS-0810-DW	8	10	45	5336	1750	50	41	32	25
MHS-0812-DW	8	12	45	6431	1200	49	29	24	19
<b>Double-Wall W/Replaceable Cut-Outs*</b>									
MHS-0808-RC	8	8	45	4295	2000	50	47	36	29
MHS-0810-RC	8	10	45	5470	1750	50	41	32	25
MHS-0812-RC	8	12	45	6585	1200	49	29	24	19

Psf= Pounds per square foot

## MANHOLE BOXES



\*ICON is a proud distributor of the Speed Shore Corporation out of Houston, Texas for all steel trench boxes, manhole boxes, high arch spreaders and other specialty items.





## ICON EQUIPMENT DISTRIBUTORS, INC. LOCATIONS:

Corporate Address • 300 Ryders Lane • East Brunswick, NJ 08816  
Toll Free: (800) 836-5011 • Fax: (732) 254-0101 • [www.iconjds.com](http://www.iconjds.com)

### BRANCHES

New England Location

North Haven, CT

Maryland Location

North East, MD

Pennsylvania Location

Myerstown, PA

